



4-H DEPARTMENT PREMIUMS \$9,200.00

SUPERINTENDENTS
Andrea C. Sawyer
Cheshire 4-H Office 352-4550

The premiums in this department are restricted to 4-H members in Cheshire County unless noted below. All Cheshire County 4-H'ers must submit a County Record, Scrapbook or Resume to the 4-H office by July 6th in order to receive premiums. Beef, Dairy, Oxen and Sheep are open to all 4-H members. All classes in the horse show are open to any junior rider. Out of State 4-H members may exhibit in large animal classes for ribbons only.

Pre-registration is required of all livestock entries. 4-H entry form is located in the back of this book. Both sides of form must be completed for entry to be accepted. Animal entries must be received by July 6th. No faxes will be accepted. An approximate count of the number and types of building exhibits to be entered is requested from 4-H leaders by July 6th. Frontage for building exhibits must also be requested by July 6th.

LABEL ALL BUILDING ENTRIES PROPERLY with the official 4-H tag. These are available at the Extension Office. Entry tags must be filled out by the member completely. Incomplete tags will not receive premiums.

4-H members are not allowed to use laser pointers on the fairgrounds. NH 4-H regulations allow their use only when used properly in doing a formal presentation.

4-H Pass Requests
MUST accompany entry and sent directly to:
CHESHIRE FAIR
247 Monadnock Highway, Swanzey NH 03446

4-H passes are sold to 4-H leaders with exhibiting clubs, 4-H exhibitors and 4-H Food Booth workers only. Parents may purchase 4-H parent passes. Pass money must accompany entry. Others must purchase passes at regular rate. Those purchasing 4-H passes are not eligible to purchase additional exhibitor passes.

4-H PARKING

Gate 3 passes are only available for vehicles delivering livestock and for drivers of food booth workers. You must indicate on your entry who the trucker of your livestock will be and day of arrival and pickup or no Gate 3 pass will be issued. The driver of this vehicle must also have a pass for him/herself. All exhibitors must park in the main parking lot (no parking fee required).

4-H CAMPING

1. All 4-Hers shall camp in the 4-H Camping area. Submit Agriculture Camper Reservation Form to make reservations to: CAMPING at CHESHIRE FAIR, 247 Monadnock Highway, Swanzey NH 03446. All camping must be pre-registered by July 6, 2011. Camping stickers must be displayed to be admitted.
2. All campers must report to the Camping Superintendent upon arrival to be checked in and assigned a spot.
3. No cars will be allowed in camp spots due to lack of space. A designated area will be set aside for use by campers. The number of vehicles allowed will depend on available space.

4-H KITCHEN

All 4-H families are asked to work a 5 hour shift to help raise funds for 4-H events throughout the year. Workers will receive a free sandwich and beverage at the end of their shift and may be reimbursed for 1 day for their pass if requested. **Clubs may not split a shift.** We have found that split shifts result in too much confusion resulting in poor customer service. Each member must work a full shift. Clubs may sign up for more than one shift. All food booth workers must park up on the hill. Food booth workers may purchase a pass at the 4-H exhibitor rate.

4-H EXHIBIT RULES

1. Work exhibited must represent a skill learned at a 4-H meeting in the current year. The actual item may have been made at home. Articles made at school or with another organization may not be exhibited. Articles made at 4-H camp or 4-H Afterschool may be shown.
2. Members must have completed project work for the year, to the Leader's satisfaction, in order to show work done in a project. **All Cheshire County 4-H'ers must submit a County Record, Scrapbook or Resume to the 4-H office by July 6th in order to receive premiums.**

3. All exhibits must be taken to the Fairgrounds and placed in the building. Exhibit tables are 3 ft. deep and exhibits should not extend beyond the 3 ft. height. Exhibits of value may want to be exhibited in a way that protects them from dust or roof leaks.
4. Exhibits will be set up on Monday, August 1 from 12:00 PM to 8:00 PM and on Tuesday, August 2 from 9:00 AM until 12:00 Noon. Exhibits must remain in place until 5:30 PM Sunday, August 7. Any exhibits removed before 5:30 PM will forfeit premiums. **All exhibits must be removed from the building by 7:00 PM Sunday evening.** Premiums will be forfeited if clubs/individuals do not remove exhibits including table paper and staples. The 4-H Office is not responsible for exhibits left in place after 7:00 PM.
5. When two or more items make up an entry, they must be exhibited together with one exhibit tag.
6. **Exhibits of unsatisfactory quality will be disqualified and will not be judged or receive a premium.**
7. 4-H Building Exhibitors may enter as many items worthy of exhibit as they wish in any department. Please remember to bring only your best work for the public to see. Members will be paid on their best ribbons, up to three per class (except crafts) and eight per department. If necessary to prorate, five premiums per department will be paid.
8. Judging, except some livestock, will be done in the Danish system. All judged exhibits will receive a ribbon indicating quality of accomplishment: B (blue) - excellent, R (red) - good, or W (white) - fair.

4-H CLUB EXHIBITS

All club exhibits are to be planned, created, and set up by members under the supervision of leaders. Space requests for exhibits must be in the 4-H Office by July 6. Score sheets will be used in judging.

Class 1. Club Educational Exhibit: Club selects a topic they would like to teach the public about, and choose display items, pictures, posters, etc. to get their message across. Exhibit should have a title. Variable frontage - must be requested in advance.

Class 2. Club Project Exhibits: All members in a club display their project items together, by group project area. Each individual item, judged a suitable entry, is awarded a ribbon and premium. Exhibits must have a theme. Variable frontage must be requested.

Class 3. Club Promotional or Community Service Exhibit: Club uses pictures, visuals, items made, thank you letters, explanations, etc. to promote 4-H or show the public what they have been doing to serve others. Judging will be both on the quality of

the community service performed and/or on the audience appeal of the exhibit. Variable frontage - must be requested.

Class 4. Interactive Exhibit: Exhibit which includes the audience with hands on learning, by using tools or answering questions. Posters alone are ineligible.

Class 5. Cloverbud Club Exhibit: All work displayed must have been completed by enrolled cloverbuds and will receive participation ribbons. The exhibit as a whole will be judged danish.

Class 6. Club Scrapbook: Annual or long-time scrapbook documenting and explaining club's activities and honors. Current year must be included. **Club scrapbooks must be in the 4-H Office by July 6 in order to receive premiums.**

Class 7. Club Container Garden

- The container garden must be large enough to create a highly visible display and be made of non-breakable material.
- Plants must be appropriate to be displayed outdoors and in full sun.
- Containers will be judged on their color combination, overall health of the plants and attractiveness of the total plant display. Club name must be visible on display.
- Container gardens will be used to beautify the grounds around the 4-H Food Booth and 4-H Exhibit Building during the fair but should be taken home by the club at the completion of the fair. Watering of the container garden will be done by Food Booth workers.

Class 8. Club Garden

- Must plant an area of at least 4 square feet.
- Plants must be appropriate to be displayed outdoors and in full sun.
- Garden will be judged on color combination, overall health of the plants and attractiveness of the total garden display. Club name must be visible on display.
- Gardens will be used to beautify the grounds around the 4-H Exhibit Building and fairgrounds. Props added should be taken home by the club at the completion of the fair but plants will remain. Watering will be done by the fair. Some annuals may be available for use.
- Space must be requested by July 6.

Premiums: Class 1-5: B \$20 R \$15 W ribbon
 Class 6 & 7: B \$6 R \$4 W ribbon
 Class 8: B \$15 R \$10 W ribbon



4-H MEMBER EXHIBITS

All individual exhibits must be planned, created, and set up by the member, under the supervision of the leader and/or parent. All work must have been completed in the current year. Space request for Individual Exhibits must be in the 4-H Office by July 6. Score sheets will be used in judging.

Class 1. Individual or Team Educational Exhibit:

Exhibit which teaches the public something. Exhibit will have variable frontage. Must have visual aids or prop items on table. Limit 3 members.

Class 2. Independent Member Project Exhibit:

Exhibit will have variable frontage, will display project work of the member, and have a theme. Limit 3 members.

Class 3. Interactive Exhibit: Exhibit which includes the audience in hands on learning, either by using tools or answering questions. Posters alone are ineligible.

Class 4. Action Exhibit, Demo, or Stage Show:

Presentation must be at least 30 minutes in length and will be scheduled in for 1 day of fair. Call the office for more information and to schedule a time.

Class 5. Individual Memory Book: Annual or long-time scrapbook recording and explaining individual activities and honors. Must contain material from the current 4-H year. **Must have been turned into the 4-H office by July 6th.**

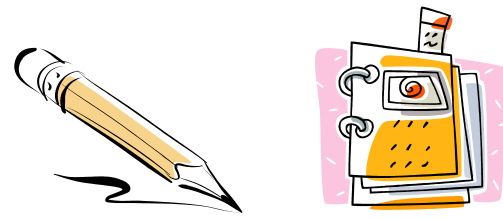
Class 6. County Record: County Record Form or Resume, Project Page, and 4-H Story all placed in a cover. Must have been turned into the 4-H office by July 6th. A: Sr. 14 & Older B: Jr. 8 to 13

Class 7. Notebook or Educational Posters: Explains member's project of the current year or special topic relating to project.

Class 8. Individual Container Garden:

- The container garden must be large enough to create a highly visible display and be made of non-breakable material.
- Plants must be appropriate to be displayed outdoors and in full sun.
- Containers will be judged on color combination, overall health of the plants and attractiveness of the display. Member name must be visible on display.
- Container gardens will be used to beautify the grounds around the 4-H Food Booth and 4-H Exhibit Building during the fair but should be taken home at the completion of the fair. Watering of the container garden will be done by Food Booth workers.

Premiums: Classes 1-3: B \$8 R \$5 W ribbon
Class 4: \$10 participation
Class 5: B \$6 R \$3 W ribbon
Class 6A: B \$5 R \$3 W ribbon
Class 6B: B \$4 R \$3 W ribbon
Class 7: B \$2 R \$1 W ribbon
Class 8: B \$6 R \$4 W ribbon



AEROSPACE

Rockets must have been built as part of a 4-H aerospace project.

- Class 1. Model rocket
- Class 2. Model airplane
- Class 3. Collection of different types of planes or rockets with labels/explanations.

Premiums: Classes 1&2: B \$1.75 R \$1.25 W ribbon
Class 3: B \$4 R \$3 W ribbon

ANIMAL EQUIPMENT

Items exhibited must have been made as a part of a 4-H Animal project. All species may exhibit here. Items exhibited in Class 1 or 2 must either be equipment used to show the animal or clothing required to show the animal.

Class 1. Basic Equipment (halters, leashes, tack covers, show sticks, feeders, etc.) includes kits.

Class 2. Major Equipment (tack boxes, carrying cages, saddle pads, chaps, etc.) all work done by members.

Premiums: Class 1: B \$1.75 R \$1.25 W ribbon
Class 2: B \$4 R \$3 W ribbon

ARTS AND CRAFTS

1. Items exhibited must have been made as part of a 4-H arts and crafts project.
2. Kits are permitted, generally for beginner level only.
3. Levels: **Beginner:** work requiring basic skill and creativity. Work taking about 1 to 3 hours - work taking less than 1 hour shall not be exhibited.
Intermediate: work taking 4 to 5 hours requiring moderate skill and creativity.
Advanced: Work done by members with several years experience in the craft, involving original design, and taking longer than 5 hours to complete.
* If the judge finds that items are misplaced in level, the judge may change the category, and judge accordingly. All advanced crafts must be pre-approved by the superintendents. Advanced exhibit tags must be initialed by the superintendents.
4. Small items that are completed in a short period of time must be grouped together and exhibited as a multi-part entry with only one exhibit tag.

5. The work done by the member must be clearly indicated on the tag. Example: purchased wood item, stenciled & finished; used mold, did own glazing.

6. Each item may only be entered in one class.

Class 1: Fabric Crafts (string art, felt collage)

a. beginner, b. Intermediate, c. advanced

Class 2: Artwork, includes posters and other hand drawn items including painting and stenciling

a. beginner, b. Intermediate, c. advanced

Class 3: Formed Crafts - using mold (clay, candles, paper)

a. beginner, b. Intermediate, c. advanced

Class 4: Formed Crafts (free form by hand) - clay, candles, paper

a. beginner, b. Intermediate, c. advanced

Class 5: Edible Crafts (candy, decorated food)

a. beginner, b. Intermediate, c. advanced

Class 6: Carving and Punching (wood, leather, tin)

a. beginner, b. Intermediate, c. advanced

Class 7: Natural Crafts (basketry, nature, arrangements)

a. beginner, b. Intermediate, c. advanced

Class 8: Collection (Items showing at least 5 different techniques learned)

a. beginner, b. intermediate, c. advanced

Class 9: Combination Craft (using a variety of techniques)

a. beginner, b. intermediate, c. advanced

Class 10: Other

a. beginner b. intermediate, c. advanced

Premiums:

Beginner: B \$1.75 R \$1.25 W ribbon

Intermediate: B \$2.50 R \$1.75 W ribbon

Advanced: B \$4 R \$3 W ribbon

FIBER ARTS

Class 1: Raw fleece or wool

Class 2: All others (ex. hides, pelts, fur). All hides and pelts must have been processed by the 4-H member or they may not be exhibited. Any item processed commercially may not be exhibited.

Premiums: B \$3 R \$2 W ribbon

Class 3: Hand spun yarn 1 ply, 2 ply, 3 ply (Yarn or roving not processed and spun by the 4-H member may not be exhibited.)

a. beginner, b. Intermediate, c. advanced

Class 4: Felted fabric

a. beginner, b. Intermediate, c. advanced

Class 5: Knitted project

a. beginner, b. Intermediate, c. advanced

Class 6: Felted project

a. beginner, b. Intermediate, c. advanced

Class 7: Woven sampler - three or more types of weaving

a. beginner, b. Intermediate, c. advanced

Class 8: Woven project

a. beginner, b. Intermediate, c. advanced

Class 9: Needlework

a. beginner, b. Intermediate, c. advanced

Class 10: Quilted project

a. beginner, b. Intermediate, c. advanced

Class 11: Braiding and hooking (include latch hook)

a. beginner, b. Intermediate, c. advanced

Class 12: Rug

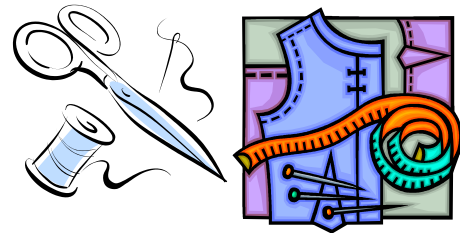
a. beginner, b. Intermediate, c. advanced

Premiums:

Beginner B \$1.75 R \$1.25 W ribbon

Intermediate B \$2.50 R \$1.75 W ribbon

Advanced B \$4 R \$3 W ribbon



SEWING

Items exhibited must have been made as part of a 4-H clothing and textile project.

Class 1: Three items, such as pin cushion, simple stuffed animal, laundry bag, simple pillow, potholder, etc. Use one tag for all three items.

Class 2: Duffel bag, knapsack, apron, multiple-piece stuffed animal, garments with turned edges.

Class 3: Garments with elasticized waistbands or waistline facings (pants, shorts, skirts, etc.)

Class 4: Pants, shorts, skirts, jumpers.

Class 5: Dresses, blouses, tops, lined vests

Class 6: Bathing suit or cover-up.

Class 7: Unlined jacket.

Class 8: Pajamas or nightgown, duster or robe.

Class 9: Garment with collar and set-in sleeves (jacket, shirt, blouse, dress, etc.)

Class 10: Napped, plaid or striped garment (skirt, dress, pants, jumper).

Class 11: Tailored coats, jackets, garments with lining.

Class 12: Items of complex construction

Premiums:

Classes 1-3: B \$1.75 R \$1.25 W ribbon

Classes 4-8: B \$2.25 R \$1.75 W ribbon

Classes 9-12: B \$4 R \$3 W ribbon

ENVIRONMENTAL & CONSERVATION

Items exhibited must have been part of a 4-H environmental science/conservation project. Items exhibited in Class 1 or 2 must be either equipment or items relative to a project.

Class 1: Basic. Bird feeders, flower presses, 10-15 wild-flowers pressed, mounted and identified or similar projects.

Class 2: Advanced. A display of seeds and other feeds for winter feeding of birds and a list of birds attracted to the feeds, 16-25 wild flowers pressed, mounted and identified, any other major project receiving prior approval from the office.

Premiums: Class 1: B \$1.75 R \$1.25 W ribbon

Class 2: B \$4 R \$3 W ribbon

FLOWERS AND LANDSCAPING

Items exhibited must have been part of a 4-H plant science project. Plants must have been grown from seed or propagated by exhibitor or, if purchased, must have been grown by exhibitor for at least 5 months. Name the variety of cut flower exhibited. Floral arrangements shall follow the principles of design, line, color, etc. Home plants may be flowering or non-flowering.

CUT FLOWERS (annuals or perennial) 3 stems:

- Class: 1. One perennial (**no more than 3 entries**)
2. One annual (**no more than 3 entries**)
3. Bouquet of two or more varieties

FLORAL ARRANGEMENTS:

- Class: 4. Miniature arrangement (no larger than 8" in any direction)
5. Table arrangement
6. Novelty arrangement

HOUSE PLANTS & TERRARIUMS:

- Class: 7. Potted Plant
8. Hanging Plant
9. Dish Gardens
10. Terrarium
11. Collection

Premiums: B \$1.75 R \$1.25 W ribbon

FORESTRY

Items exhibited must have been produced as part of a 4-H forestry project.

Class 1: Twig, leaf seed and/or wood collection mounted and labeled.

Class 2: One quart maple syrup in a glass jar.

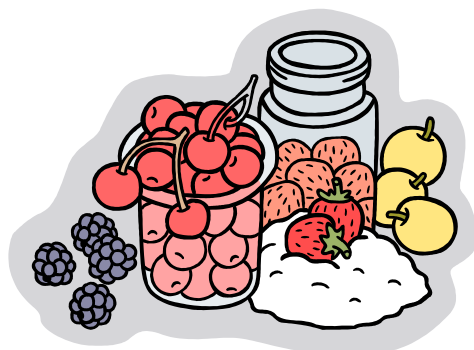
Class 3: One-half pound maple candy.

Class 4: Notebook or posters explaining member's forestry project of the current year.

Class 5: A display of 5 insects that damage trees, identified by name and location.

Class 6: A sealed display of damaged tree parts – 5 different diseases represented.

Premiums: B \$1.75 R \$1.25 W ribbon



FOOD PRESERVATION

Items exhibited must have been made as part of a 4-H food preservation project. All meats and vegetables (except tomatoes) must be canned by pressure cooker method. Fruits, pickles and tomatoes may be processed by boiling water bath. Jellies, jams and other similar preserves must be processed by boiling water bath. Current USDA recommendations must be used.

Canning - commercial canning jars must be used. All jars must be labeled with the following information: product name, processing method used, processing date, processing time. Use your own labels.

Drying - foods should be displayed in clear plastic bags. Labels must contain the following information: product name, drying method used (solar, air, microwave, oven, freeze-dried, etc.), processing date. Use your own labels.

CANNING

Class 1: Single jar of a product

Class 2: Collection of 5 jars, all different, to be used in a meal. Must have menu included. Include nutritional information required in food and nutrition exhibits.

DRYING

Class 3: Single bag of product

Class 4: A mixture of three or more dried food examples: soup mix, trail mix, herbs, etc.

Class 5: A collection of five different dried foods to be used in a meal. Must have menu included. Include nutritional information required in food and nutrition exhibits.

Premiums: Class 1 & 3: B \$1.75 R \$1.25 W ribbon

Class 2, 4, 5: B \$4 R \$3 W ribbon

FOOD AND NUTRITION

Items exhibited must have been part of a 4-H food and nutrition project. A recipe must be included with each food exhibited. The finished product must be identified with one of the food groups. Packaged mixes may not be used. Food should be displayed on disposable plates covered with plastic. Judges will give preference to foods high in nutritional content. Judges will not downgrade foods normally served hot, for not being heated. Decorated cakes and food are exhibited in the Arts and Crafts Department. Foods subject to spoiling must be labeled and placed in kitchen fridge, with card left in exhibit describing item and location in fridge.

- Class 1: 2 muffins, biscuits, cookies, doughnuts
- Class 2: ½ loaf quick bread
- Class 3: 2 yeast rolls or ½ yeast bread
- Class 4: 1 wedge pie or 1 serving of cake or 2 cupcakes (frosted or unfrosted)
- Class 5: Home packed lunch box with menu
- Class 6: International food, indicate country of origin
- Class 7: Main dish
- Class 8: Creative, nutritious snack
- Class 9: Special diet; one food item, must indicate type of special diet and why recipe is suitable for diet (example-low sodium, bland, high fiber, etc.)
- Class 10: A food prepared from a recipe adapted by the exhibitor to increase nutritional content. Must include old and adapted recipes.
- Class 11: A food prepared from a recipe the exhibitor has created.
- Class 12: A notebook, poster or other visual aid that relates food to health and fitness, consumerism, jobs and careers, or other areas.
- Class 13: Poster showing a balanced menu for a single day. Must show how food group nutritional requirements are met.

Premiums: Classes 1-8: B \$1.75 R \$1.25 W ribbon
Class 9-13: B \$4 R \$3 W ribbon



GARDEN

Fruits and vegetables exhibited must have been grown as part of a 4-H plant science project. Vegetables and fruit should be uniform in appearance and exhibited in the following quantities (except for classes 5 & 6): Three each of: beets, carrots, onions, parsnips, peppers, popcorn, potatoes, sweet corn, tomatoes and turnips. One each of: broccoli, cabbage, cauliflower, celery, citron, cucumbers, egg plant, melons, pumpkins, squash and watermelon. Five specimens of: lima, shell or string beans, peas in a pod, shelled peas or ½ pint container of dry beans. Written guidelines for preparing specific vegetables and fruits are available from the Extension Office. See guidelines for open show Vegetables. Vegetables should be exhibited on disposable plates.

- Class 1: Members may exhibit up to six different varieties of vegetables in the quantities listed above. Each vegetable will be displayed and judged separately.
- Class 2: Half-cup of fruit
- Class 3: Salad vegetables, two or more varieties
- Class 4: Decorated vegetables
- Class 5: Collection of vegetables for one recipe attractively displayed with recipe
- Class 6: Collection attractively displayed in a box, basket, chopping bowl, etc., six or more varieties in quantities listed above.

Premiums: Classes 1-4: B \$1.75 R \$1.25 W ribbon
Class 5-6: B \$4 R \$3 W ribbon

PHOTOGRAPHY

Photographs exhibited must have been taken as part of a 4-H photography project. All photos must be properly mounted or framed. Classes 1 & 5 must include nature, people or animals, still life or landscape and miscellaneous subjects. Camera used and method of printing should be listed along with any alterations made to touch up or improve photo.

- Class 1: Collection of at least 10 photographs
- Class 2: 1 black & white enlargement 5"x7" or 8"x10"
- Class 3: 1 color enlargement 5"x7" or 8"x10"
- Class 4: Photo story of at least 6 snapshots in either black& white or color. Must have brief captions.
- Class 5: Collection of at least 10 mounted photographs or slides taken, developed, printed by exhibitor.
- Class 6: Collection of at least 5 enlargements taken, developed and printed by exhibitor.
- Class 7: Collection of three hand printed photographs
- Class 8: One hand colored print

Premiums: Classes 1-4: B \$1.75 R \$1.25 W ribbon
Class 5-8: B \$4 R \$3 W ribbon

WOODWORKING

Items exhibited must be a 4-H woodworking project. For items repaired or refinished (classes 8-9), include a note regarding condition of article prior to project work done and what the member did.

BEGINNER:

- Class 1: Pre-cut item constructed and finished pieces.
- Class 2: Small item cut with hand tools, constructed & finished
- Class 3: Large item cut with hand tools, constructed & finished.

INTERMEDIATE:

- Class 4: Chair or stool, assembled & finished from kit
- Class 5: Small item cut, constructed & finished
- Class 6: Large item cut, constructed & finished
- Class 7: Chair or stool cut, constructed, seated & finished
- Class 8: Item repaired or refinished
- Class 9: Furniture re-upholstered

ADVANCED:

- Class 10: Major piece of furniture cut, constructed & finished
- Class 11: Lathe worked item

Premiums: Classes 1-4: B \$1.75 R \$1.25 W ribbon
Classes 5-6: B \$2.25 R \$1.75 W ribbon
Classes 7-11: B \$4 R \$3 W ribbon

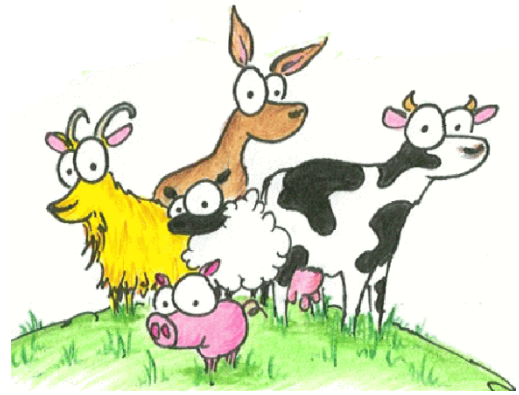
OTHER

(Rocks & Minerals, Computers, Careers, Personal Grooming, Entomology, Child Care, Hobbies, Collections, etc.) The Superintendent must approve entry IN ADVANCE. Any entries not having approval by July 6 will not be exhibited.

Premiums: at the discretion of the Superintendent

The 4-H Pledge

I pledge:
My **HEAD** to clearer thinking,
My **HEART** to greater loyalty,
My **HANDS** to larger service, and
My **HEALTH** to better living,
For my Club, my Community,
my Country, and my World.



RULES AND REGULATIONS FOR 4-H LIVESTOCK SHOWS

1. Parents of exhibitors, as well as exhibitors of animals at livestock shows shall at all times conduct themselves with honesty and good sportsmanship. Their conduct in this competitive environment shall always reflect the highest standards of honor and dignity to promote the advancement of 4-H and agricultural education. All youth leaders and parents working with youth exhibitors have responsibility to do more than avoid improper conduct or questionable acts. Their moral values must be so certain and positive that those younger and more pliable will be influenced by their fine example. No type of animal abuse shall be tolerated.

2. Direct criticism or interference with the judge, fair or livestock show management, other exhibitors, breed representatives, or show officials before, during or after the competitive event is prohibited. In the furtherance of their official duty, all judges, fair and livestock show management, or other show officials shall be treated with courtesy, cooperation and respect and no person shall direct abusive or threatening conduct toward them.

3. **ENTRIES.** All entries must be made in writing and must be postmarked on or before July 6th and sent to: Cheshire Fair, 247 Monadnock Highway, Swanzey NH 03446. No fax entries are accepted. Animal approval forms, lease forms, and pass money MUST accompany entries.



All Cheshire 4-H members must submit a 4-H Record, scrapbook, or resume to the 4-H Office by July 6th in order to receive premiums.

4. **ELIGIBILITY.** All animals exhibited must be animals which are appropriately named on current, valid, 4-H Approval Forms. All animals or groups of animals shown must be owned or leased by the 4-H member.

Ages of 4-Hers are calculated as of 1/1 of the current project year. Divisions are: Seniors (14-18 years), Juniors (8-13 years) and Novice (8-13 years) in first year of showing unless otherwise defined. No youth under age 8 (cloverbuds) may exhibit any animal in the 4-H livestock show.

5. **Health.** Animal health shall conform to current, applicable health standards as set by the New Hampshire Department of Agriculture and announced by the NH State Veterinarian. In addition to meeting current health standards, all mammals exhibited at a 4-H event or show must have been immunized for rabies at least 30 days prior to and within one year of the fair and papers verifying that must be made available upon request. Out of state horses must have certificate of negative Coggins dated within 6 months of show date. Health checks by a designated representative of the show may be made at any time and any animals found unhealthy must be removed from the fairgrounds. Any exhibitor that disagrees may request verification from a veterinarian at their own expense.

6. **Age of Animals.** Any animal that will be shown in a 4-H class must have been born by and listed on the 4-H Approval Form by the specified date for that species.

7. If a 4-H member is exhibiting his/her animals and receives assistance from another 4-H'er the owner must be at the head of the animal. Foot setters are optional.

8. **Outside Assistance.** 4-H members are solely responsible for showing and handling their animal in the ring. If a 4-H member has more than one animal entered in a breed or market class, they may ask another 4-H member to exhibit the second animal.

9. **Fitting and Showing.** All exhibitors must participate in the appropriate Fitting and Showing class using an animal that they will exhibit in a type, performance, or market class in the show. The exhibitor must prepare and show his own animal. Divisions are as follows: Senior:14 years and older; Junior 9 to 13 years (if divided Jr B:12-13 years; Jr A: 9-11 years), Novice:8 -13 years and in their first year of showing. Classes may be divided or combined at the discretion of the show superintendent. If classes exceed ten exhibitors they may be divided.

10. It is the exhibitor's responsibility to know what class they are supposed to be in and when that class will take place. Exhibitors who miss their class will not be allowed to exhibit in a class designated for another group. Exhibitors who miss their showmanship class may exhibit in the rest of the show, but will receive no

premiums. Exhibitors missing a breed, market, or performance class will not receive premiums for that class.

11. Members whose livestock must remain on the fairgrounds will not be allowed to stay overnight in or around the barns without parental permission and supervision. Cheshire County 4-H assumes no responsibility for supervision of 4-H members staying overnight on the fair grounds. All 4-Hers are the sole responsibility and must be under the direct supervision of their parents or an adult appointed by their parents. Premiums will be withheld and 4-H members may be expelled for misconduct (including possession of alcoholic beverages, tobacco or illegal drugs); and failure to abide by rules or instruction of the Superintendent or fair security.

12. **System of Awards.** Awards will be made on the group placing system. The judge will designate the groups - blue, red, white. In some species the judge will also line up each entry according to merit - 1st, 2nd, 3rd, etc. Animals failing to meet minimum acceptable standards of quality and appearance will not receive premium money. The judge is to make the final decision.

13. It is permissible for a 4-H member to enter more than one livestock show, i.e. sheep, cattle or horse; however, no exception will be made to existing rules and regulations to permit this if conflicts occur as to time of showing.

14. **Exhibitors will provide their own hay, grain and bedding.**

15. The 4-H Superintendent reserves the right to withhold prize money from any exhibitors who fail to comply with any of these rules and regulations or who are not currently enrolled 4-H members in good standing with their 4-H office.

16. **Credentials.** All exhibitors are responsible for presenting their own forms and papers at the proper time. Only original registration papers are acceptable.

17. **Appearance of Exhibitors.** It is expected that youth will wear appropriate attire at any time they are representing 4-H during the length of the fair. Superintendents may require a participant to change to more appropriate attire while in the barn area. In the show ring, the attire of white shirt, solid color skirt or pants and safe shoes is always acceptable. NO BLUE JEANS or inappropriate clothing may be worn in the ring. Superintendent will not allow any exhibitors in the ring who are not neatly, cleanly or appropriately dressed.

Clothing with farm or business names or logos is unacceptable at 4-H shows. No cell phones are to be on in the show ring.

18. Premiums will be mailed to out-of-county exhibitors by October. Cheshire exhibitors may pick up their checks at the 4-H office after October 1st. Premiums may be prorated, if necessary. In addition, members may be limited to \$100.00 in total premiums if necessary.

19. Animals are shown at the risk of the 4-H owner or lessor. Any damages to persons or property are the legal and financial responsibility of the 4-H member and their family who owns and leases the animal.

4-H BEEF SHOW

☞ **Initial sawdust will be provided. Additional bedding is the responsibility of the exhibitor.**

1. Eligibility. Animals to be exhibited must have been enrolled as a 4-H project by June 1 of the current year. Open to all 4-H members. Limit 5 animals per exhibitor. Any animal exhibited in fit and show, must also show in their appropriate type or market class. Each animal may show in type or market, but not both classes.
2. Ownership. Animals must be owned by the exhibitor and registered animals must be registered in the exhibitors name only, with the exception of leased animals which must have been approved by your 4-H educator. Grade animals may be shown in classes.
3. Credentials. All papers pertaining to the health and registration of the animals and approval form certified by your County 4-H Educator must be presented to the Superintendent in the 4-H barns at the posted time. Animals not entered or without proper papers or exhibitors who fail to show papers will be disqualified.
4. Manure Disposal. Bring wheelbarrows or baskets for manure removal. Manure must be placed in designated place at the end of the barn.
5. Refer to 4-H Livestock Rules & Regulations elsewhere in this book for more information.
6. Times. . **ALL BREEDS MUST ARRIVE BEFORE THURSDAY AT 10:00 AM, AND STAY IN PLACE UNTIL RELEASE TIME ON SUNDAY AT 5:30 PM.**

Beef Quiz	Thursday	1:00 PM
Papers Checked	Thursday	3:00 PM
4-H Show	Friday	4:00 PM
	(or at conclusion of Dairy Show)	
Calf Scramble Parade	Saturday	4:00 PM
Cattle Released	Sunday	5:30 PM

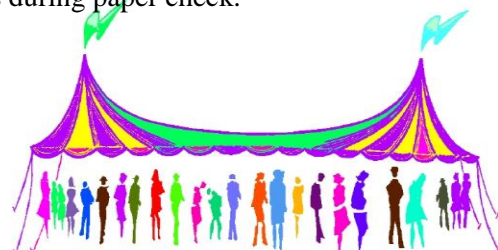
Classes:

- 1: Beef Knowledge, written quiz
- 2: Senior Fitting & Showing
- 3: Junior B Fitting & Showing (12-13)
- 4: Junior A Fitting and Showing (9-11)
- 5: Novice Fitting & Showing
(may be divided Junior & Senior if entries warrant)
- 6: Market Steer, or Heifer born 1/1/10 thru 7/31/10 (will be divided by weight if entries warrant. Weighing of market animals will be at 5:00 PM on Thursday)
- 7: Feeder Steer or Heifer born 8/1/10 thru 3/31/11
- 8: Scramble Class - open to all calf scramble animals caught at last year's fair. Not eligible for any other class, except Fitting & Showing
- 9: Market Champion - 1st & 2nd place winners, classes 5,6,7
- 10: Junior Bull Calf, born 1/1/11 thru 4/30/11
- 11: Junior Heifer Calf born 1/1/11 thru 4/30/11
- 12: Senior Heifer Calf born 9/1/10 thru 12/31/10
- 13: Summer Yearling Heifer born 5/1/10 thru 8/31/10
- 14: Junior Yearling Heifer born 1/1/10 thru 4/30/10
- 15: Senior Yearling Heifer born 9/1/09 thru 12/31/09
- 16: Two Year Old Heifer born 9/1/08 thru 8/31/09
- 17: Three Year Old Cow born 9/1/08 or earlier
- 18: Cow and Calf
- 19: Herd-3 animals of any age, same breed, owned by exhibitor & shown in previous class
- 20: Pair of Calves - 1 heifer calf, 1 bull calf
- 21: Junior Champion - 1st place winners, classes 10,11,12,13,and 14
- 22: Senior Champion - 1st place winners, classes 15 and 16
- 23: Grand Champion, winners of classes 17 &18
- 24: Beef Herdsmanship - club awards only. Display must include an educational or industry promotion message. Judged on general appearance, good livestock husbandry, showmanship, personal appearance and conduct.

Premiums:

Class 1:	B \$10	R \$8	W \$4
Classes 2-4:	B \$12	R \$8	W \$4
Classes 5-16,20-22:	B \$8	R \$6	W \$4
(Danish) Class 23:	B \$25	R \$20	W Ribbon

Bred by Exhibitor. All animals bred by exhibitor will receive a 50% increase in the premium awarded in the type class. Papers must be presented with 4-H approval forms during paper check.



4-H DAIRY SHOW

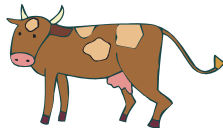
☞ **Initial sawdust will be provided. Additional bedding is the responsibility of the exhibitor.**

1. Eligibility. Open to all 4-H members. Animals to be exhibited must have been enrolled as a 4-H project by May 1 of the current year. If more than 180 animals are entered, entries will be accepted on a first received basis. All animals shown in fit and show, must also show in the appropriate type class.
2. Ownership. Animals must be owned by the exhibitor and registered animals must be registered in the exhibitors name only, with the exception of leased animals which must have been approved by your 4-H educator. Grade animals may be shown in classes.
3. Credentials. All papers pertaining to the health and registration of the animals and approval form certified by your County 4-H Educator must be presented to the Superintendent in the 4-H barns at the posted time. Animals not entered or without proper papers or exhibitors who fail to show papers will be disqualified.
4. Manure Disposal. Bring wheelbarrows or baskets for manure removal. Manure must be placed in designated place at the end of the barn. All stalls must be cleaned before leaving or premiums will be forfeited.
5. Members may show more than one animal in a class, but premiums will be only paid on one. Limit 5 animals per exhibitor. Milking senior yearling must enter the 2 year old class.
6. Stabling. Exhibitors will be assigned stall space in the 4-H barn unless member notes on the entry form that he wishes to be stabled with the open entry.
7. Show halter preferred, but not required.
8. Refer to 4-H Livestock Rules & Regulations elsewhere in this book for more information.

9. ALL BREEDS MUST ARRIVE BEFORE THURSDAY AT 10 AM, AND STAY IN PLACE UNTIL RELEASE TIME ON SUNDAY AT 5:30 PM.

Holstein, Shorthorn, Brown Swiss,
Ayrshire, Guernsey, Jersey

Arrive by: Thursday 10 AM
Papers Checked: Thursday 3:00 PM
Quiz: Thursday 1:00 PM
4-H Show: Saturday 9 AM
Cattle Released: Sunday 5:30 PM



Classes:

Fitting & Showing

1. Senior Fitting & Showing - 14 yrs and older as of January 1 of current year
2. Junior B Fitting & Showing - 12-13 yrs old as of January 1 of current year

3. Junior A Fitting & Showing - 9-11 yrs old as of January 1 of current year
4. Novice Fitting & Showing - 8-13 yrs old as of January 1 of current year 1st year of showing dairy animals
5. Champion Showman - 1st place winner, classes 1, 2, 3 & 4
6. Dairy Knowledge - written quiz. Must be taken or will forfeit premiums.

Breed Classes

7. Spring Heifer Calves, born 3/1/11 thru 4/30/11
8. Winter Heifer Calves, born 12/1/10 thru 2/28/11
9. Fall Heifer Calves, born 9/1/10 thru 11/30/10
10. Summer Yearling Heifer, born 6/1/10 thru 8/31/10
11. Spring Yearling Heifer, born 3/1/10 thru 5/31/10
12. Winter Yearling Heifer, born 12/1/09 thru 2/29/10
13. Fall Yearling Heifer, born 9/1/09 thru 11/30/09- not in milk; yearlings which have calved will show in Class 10
14. Junior Champion - 1st place winners, classes 7 - 13
15. Junior Two Year Old Heifer, born 3/1/09-8/31/09 must have calved
16. Senior Two Year Old Heifer, born 9/1/08-2/29/09
17. Three Year Old Cows, born 9/1/07 thru 8/31/08
18. Four Year Old and Older Cows, born before September 1, 2007
19. Dry Cow - any cow that has calved, not in milk, not shown in any the above classes
20. Senior Champion 1st place winners, classes 15-19
21. Grand Champion - winners of classes 14 & 20
22. Herd – 3 animals any age, same breed, leased/owned by exhibitor shown in previous classes.
23. Produce of Dam
24. Dam - Daughter
25. Dairy Herdsmanship – Club Awards Only. Display must include an educational or industry promotion message. Judged on general appearance, good livestock husbandry, sportsmanship, personal appearance & conduct. Must be stabled with 4-H club.

Premiums: Classes 1-4: B \$12 R \$8 W \$4
Class 6: B \$10 R \$8 W \$4
Classes 7-24: B \$8 R \$6 W \$4
(except classes 14, 20, 21 - Danish)
Class 25: B \$25 R \$20 W Ribbon

NOTE: Cows 3 years or older - bonus premiums will be awarded to cows that have been on either official DHIA test or Owner Sampler Testing if they have produced in a lactation of 305 days or less, at least 500 pounds of butterfat. Records must be available to substantiate production.

<u>Butterfat Prod.</u>	<u>Premium Increase</u>
650 lbs or over	50%
600 - 649 lbs	40%
550 - 599 lbs	30%
500 - 549 lbs	20%

Bred by Exhibitor. All animals bred by exhibitor will receive a 50% increase in the premium awarded in the type class. Papers must be presented with 4-H approval forms during paper check.

4-H WORKING STEER

☞ **Initial sawdust will be provided. Additional bedding is the responsibility of the exhibitor.**

1. This is one of three state shows that determine Eastern States qualifications.
2. Entries: Must be postmarked by July 6, 2011
3. Eligibility. Open to all 4-H oxen members. However, if more than 35 exhibitors enter, entries will be accepted on a first received basis.
4. Credentials. All papers pertaining to the health and enrollment of your animals and approval forms certified by your County 4-H Educator must be presented to the Superintendent at the 4-H Fair Office at the time specified. Animals un-entered or without proper papers, or exhibitors who fail to show papers will be disqualified.
5. Refer to 4-H Livestock Rules & Regulations elsewhere in this book for more information.
6. Any 4-H member showing open will pay open fees.

TIMES:

Wednesday – August 3

- TBA AM Quiz & paper check - Dairy ring
 10 AM Showmanship classes – Dairy ring
 Distance Pull- Arena

Thursday – August 4

- 9 AM Cart Class and Best Trained- Dairy Ring

WORKING STEER QUIZ

Required by all 4-H's or will forfeit premiums

Premium: B \$10 R \$8 W \$4

FITTING & SHOWMANSHIP

Condition and appearance of team, teamster and equipment considered

- Class 1. Senior Teamster - members 14-18 as of Jan. 1
 Class 2. Junior Teamster - members 9-13 as of Jan 1
 Class 3. Novice Teamster - members 8-13 as of Jan 1, showing for their first year

Premium: B \$12 R \$8 W \$4

CART CLASSES

Ability of team and teamster to hitch to and maneuver a 2-wheeled cart as directed by judge

Class 4. Senior Teamster

Class 5. Junior Teamster

Class 6. Novice Teamster

BEST TRAINED PAIR

Class 7. Senior Teamster

Class 8. Junior Teamster

Class 9. Novice Teamster

Class 10. Distance Pull. Age, ability and performance of team and teamster considered. Working steers must be able to pull **70% of their weight**, including the stone boat, for the seniors and the juniors. Novice teamsters are expected to pull a weight not to exceed 50% of their team's weight including the stone boat.

Premium: B \$8 R \$6 W \$4

Class 11. Teamster Award: Points will be given in classes 1 thru 10. Judge has the option of adding extra points for sportsmanship. Trophies awarded to Champion Senior Teamster, Champion Junior Teamster and Champion Novice Teamster.

An hour after the last class members selected to participate at Eastern States Exposition will be announced.



4-H SHEEP SHOW

☞ **Initial sawdust will be provided. Additional bedding is the responsibility of the exhibitor.**

1. Open to all 4-H members with approved projects.
2. Ownership. Animals must be owned or leased by the exhibitor and identified on the exhibitor's 4-H Approval Form. Leased animals must have lease forms approved by the exhibitor's 4-H Educator. Grade and cross ewes may be shown. Rams shown in breed classes must be registered. Entries in Bred & Owned classes must be registered animals and must be registered in the exhibitors name only.
3. Papers. Exhibitors are responsible for having 4-H approval forms, lease records, registration papers, and documentation of rabies vaccinations available for review. Animals without proper papers or identification will be disqualified from the show.

Premiums will only be paid for one entry in each class and for one breed.

4. Health. All animals must be free from infectious and communicable diseases. Health checks will be performed by a designated representative prior to unloading or penning of any animal. Subsequent health checks may also be performed at any time by a designated representative while animals are on the fairgrounds if health concerns are identified.
5. Pens. Pens will not be available until 5:00 PM on Thursday. Panels for pens are provided by the fair. **No bedding or other supplies are provided.** Any dividers needed for sheep in the Scrapie Program must be provided by the exhibitor. 4-H pens will be set up by the Superintendent and volunteers prior to scheduled arrival times. Pen assignments will be made based upon information provided on the entry forms and will be posted. 4-H exhibitors are requested to assist in setup of additional pens for the open sheep show after the 4-H show ends. 4-H exhibitors are expected to clean out their pens before departing.
6. Arrival and Departure Times. All exhibitors must be on the grounds and all sheep penned by 7:00 PM on Thursday. Scheduled departure time is 6:30 PM on Friday following the 4-H Exhibitors meeting.
7. Meetings. All exhibitors are required to attend the exhibitor meetings which will be held in the sheep barn. Parents are also encouraged to attend. Skills Class and Shepherds Awards will be presented at the final exhibitor meeting.
8. Show Rules. Only 4-H sheep exhibitors may work on any sheep. Halters will be used in all classes and at all times sheep are not in the pen. Each exhibitor is responsible for their pen area and their equipment. If a 4-H exhibitor receives assistance from another 4-H'er in showing their animal, the owner must be at the head of the animal. Foot setters are optional. Barn lights will be turned off at 10:00 PM. In case of dispute, sheep will be mouthed for age determination.
9. Dividing Classes. Fit & Show, Skills, and Leadline may be divided if there are more than 10 entries. Junior age divisions would be Intermediate (12-13) and Junior (9-11). Fit & Show may also have a separate wool division if there are at least 3 wool entries. Breeds will be divided if there are at least 3 exhibitors and 5 animals of a breed.
10. Premiums. Premiums will only be paid for one entry in each class and for one breed in the breed classes.
11. Refer to 4-H Livestock Rules & Regulations elsewhere in this book for further information.

Show Schedule:

Exhibitor Meeting	Thursday	7:00 PM
Skills Class	Thursday	7:15 PM

Fit & Show	Friday	10:00AM
Breed & Market Classes	Friday	12:30 PM
Leadline	Friday	4:00 PM
Exhibitor Meeting	Friday	6:00 PM

CLASSES: All exhibitors must enter Class 2 (Fit & Show), Class 4 (Quiz) and Class 13 (Shepherds).

- Class 1. Lead Line A- Senior; B-Junior; C-Novice
Narration must be provided to superintendent by Noon on Wednesday. Sheep must be correctly fitted and trimmed for its breed. No coloring, covering or decoration of sheep. Garment may be purchased or sewn and at least a portion of the garment must be at least 70% wool. Tie breaker points will be awarded if a part of the garment is made by the exhibitor. Garment judged on presentation and appropriateness to age. Entrant and sheep should complement each other and promote both 4-H and the sheep industry.
- Class 2. Fit & Show A- Senior B- Junior C- Novice.
- Class 3. Market Lamb - Ewe, wether, ram lambs may be shown. All must be properly fitted (slick sheared) as market lambs and identified on approval forms as market lambs. Ram lambs must weigh less than 120 lbs. Lambs may be weighed prior to show and divided accordingly. Market lambs cannot be shown in any other breed class during the same show season.
- Class 4. Sheep Skills Class
A- Senior; B-Junior 12-13yrs;
C-Junior 9-11 yrs; D- Novice

Breed Classes:

5. Junior Ewe Lamb, born 1/1/11 thru 4/30/11
6. Senior Ewe Lamb, born 9/1/10 thru 12/31/10
7. Yearling Ewe, born 9/1/09 thru 8/31/10
8. Junior Ram Lamb, born 1/1/11 thru 4/30/11
9. Senior Ram Lamb, born 9/1/10 thru 12/31/10
10. Exhibitor's Flock. Ram, Ewe Lamb, Yearling Ewe
All animals must be owned by exhibitor and registered in exhibitor's name with the appropriate breed registry. (Papers must be shown in ring, all animals must have been shown as individuals.)
11. Best of Breed - picked from first place animals in Classes 5-9.
12. Best of Show - picked from winners of Class 11.
13. Shepherds Award - Exhibitors will be scored on the cleanliness, neatness, identification and management of their exhibit (pens and animals and equipment); their cooperation and assistance with fair staff and other 4-Hers; their sportsmanship, and their adherence to the 4-H code of conduct. Exhibitors will also be scored on their overall exhibit's

presentation and their personal interaction with the public. Exhibitors are encouraged to provide educational or informative displays, posters and/or signs at their pens. Exhibitors needing materials to mount or hang displays should contact the 4-H sheep show superintendent, Julia Blood, 603-352-2050 (ebloodjr@ne.rr.com).

Premiums:

- Class 1, 4: B \$10 R \$8 W \$6
- Class 2: B \$12 R \$8 W \$4
- Class 3, 5-10: B \$6 R \$4 W \$2
- Class 11, 12: Ribbons, special awards
- Class 13: B \$8 R \$5 W Ribbon

Bred by Exhibitor. All animals bred by exhibitor will receive a 50% increase in the premium awarded in the type class. Papers must be presented with 4-H approval forms during paper check.



SMALL ANIMAL SHOW

Thursday –

- 9: 00 AM Animals arrive
- 1:00 PM -Quiz & Skillathon
- 2:30 PM Fit & Show & Conformation Judging
- 6:00 PM Release

1. Entries. All entries must be postmarked on or before July 6. Pass fees due with entry.
2. Eligibility. Open to Cheshire 4-H members that were enrolled in a 4-H rabbit or cavy project during the past year. All exhibitors must participate in small animal supervision shifts. Contact superintendent for details & schedule.
3. Cages. Standard rabbit coops will be provided. No member is allowed more than 4 cages. If you need more or if your pet is not suited to a rabbit coop, please bring your own cage. Members are responsible for their pet's bedding, feed & water.
4. Number of animals. All exhibitors are limited to 6 entries. Members must be present during judging and are expected to present their animals to the judge during Fit & Show. Only clean, healthy animals will be accepted for exhibit. All mammals must have been vaccinated for rabies according to State Vet recommendations.
5. Animals must be cared for throughout their stay and cage must be folded and stored; and table and floor cleaned and swept when animal leaves. Any exhibitors not complying will forfeit premiums.
6. Records must be available for judge's inspection. Record forms are available from your 4-H Office.
7. Wool Class - rabbits are not required to show in their conformation class to be eligible. Wool must be in show condition.

8. Breeds will be separated if there are at least 6 entries and 3 exhibitors in a breed. Best In Show Trophy if at least 10 entries & 3 exhibitors entered. Best Reserve Trophy if at least 15 entries & 5 exhibitors.
9. Animals for sale. Exhibitors may have additional animals for sale ONLY IF they have made arrangements with the superintendent in advance. These animals must be healthy and meet State Veterinarian Regulations including rabies vaccinations. Exhibitors must bring cages for sale animals, the cage must be clearly marked with owner's name, address, phone. Sale animals must be cared for & supervised. Supervision duties may be shared. Cage area must be swept before leaving.
10. Refer to 4-H Livestock Rules & Regulations elsewhere in this book for more information.

CLASSES:

1. Small Pet Knowledge (mandatory)
May include basic knowledge and skills such as basic care and management techniques, health & diseases, breeding, kindling, feeding, etc.
Premium: B \$10 R \$8 W \$4
2. Fitting & Showing: a. Senior b. Junior c. Novice
Judged on: animal condition, handling, knowledge.
Premium: B \$12 R \$8 W \$4

CONFORMATION

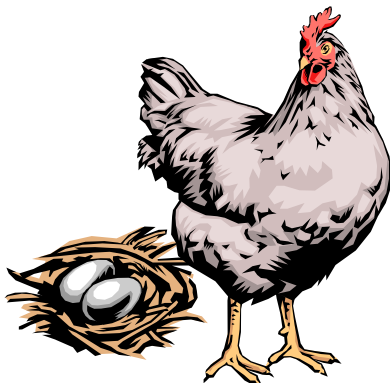
Individual conformation premium - B \$2 R \$1.50 W \$1
Group/specialty class premium - B \$2 R \$1.50 W \$0

3. Rabbits (purebreds only)
 - a. Senior bucks
 - b. Senior does
 - c. Intermediate bucks
 - d. Intermediate does
 - e. Junior bucks
 - f. Junior does
 - g. Wool Class - see rule 8

Ages: Small rabbits: Jr- born 1/11 thru 4/11, Sr- born 2009 or before

Large rabbits: Jr-born 2/11 thru 4/11, Intermediate-born 12/10 thru 1/11, Sr- born before 12/10

4. Cavies (purebreds only)
 - a. Senior boars, born 2010 or before
 - b. Senior sows, born 2010 or before
 - c. Junior boars, born 1/11 thru 4/11
 - d. Junior sows, born 1/11 thru 4/11
5. Rabbit & Cavy Pet Class (all breeds)
 - a. Cavies – Boars
 - b. Cavies – Sows
 - c. Small rabbits-Bucks
 - d. Small rabbits-Does
 - e. Medium rabbits-Bucks
 - f. Medium rabbits-Does
 - g. Large rabbits - Bucks
 - h. Large rabbits - Does
 - i. Wool Class - see rule 8



POULTRY

Friday: Show birds arrive between 3:00 and 7:00 PM

Sunday: 9:00 AM - Registration & papers checked

9:30 AM - Fit & Show

- Conformation Judging

Quiz

5:00 PM - Release

1. Entries. All entries must be postmarked on or before July 6. Pass fees due with entry.
2. Eligibility. Open to Cheshire, Hillsborough and Sullivan County 4-H members that were enrolled in a 4-H poultry project during the past year. All exhibitors must participate in poultry supervision shifts. Contact superintendent for details & schedule.
3. All exhibitors must enter in Fit and Show. The bird does not have to but may also show in type class.
4. Cages. Standard poultry or rabbit coops will be provided. No member is allowed more than 5 cages. If you need more please bring your own cage. Members are responsible for their bird's bedding, feed & water.
5. Number of animals. All exhibitors are limited to 8 entries. Members must be present during judging to present their animals to the judge during Fit & Show. Animals must remain until 5:00 PM, Sunday and may not leave before the end of the show. They must be removed by 7:00 PM Sunday.
6. Birds will be inspected upon arrival. Only clean, healthy birds will be accepted for exhibit. All entries must adhere to New Hampshire State Veterinarians Regulations regarding poultry.
7. Animals must be cared for throughout their stay and cage must be folded and stored; and table and floor cleaned and swept when animal leaves. Any exhibitors not complying will forfeit premiums.
8. Records must be available for judge's inspection. Record forms are available from your 4-H Office.
9. Breeds will be separated if there are at least 6

entries and 3 exhibitors in a breed. Trophy for Best In Show if at least 10 entries and 3 exhibitors entered. Trophy for Best Reserve if at least 15 entries and 5 exhibitors.

10. Birds for sale. Exhibitors may have additional birds for sale ONLY IF there is space AND they have made arrangements with the superintendent in advance. These birds must be healthy and meet State Veterinarian Regulations. Exhibitors must bring their own cages for sale animals, the cage must be clearly marked with owner's name, address, phone. Sale birds must be supervised. Members may share supervision duties. Cage area must be swept before leaving.
11. Refer to 4-H Livestock Rules & Regulations elsewhere in this book for more information.

Class 1: Fit and Show - Judged on: bird condition, handling and knowledge

a. Senior b. Junior c. Novice

Class 2: Meat Birds

Class 3: Standard Recognized Show Birds

A. Cocks/roosters B. Cockerals

C. Hens D. Pullets

Class 4: Heritage Breeds or Nonstandard Colors

A. Cocks/roosters B. Cockerals

C. Hens D. Pullets

Class 5: Game Birds

A. Male less than 1 yr B. Male 1 yr +

C. Female less than 1 yr D. Female 1 yr +

Class 6: Waterfowl

A. Male less than 1 yr B. Male 1 yr +

C. Female less than 1 yr D. Female 1 yr +

Class 7: Production Birds

Class 8: Pet Class

Class 9: Eggs - 1 dozen in carton

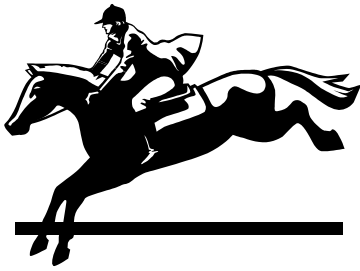
Class 10: Quiz (required for all exhibitors)

Premiums: Class 1: B \$12 R \$8 W \$4

Classes 2-9 B \$2 R \$1.50 W \$1

Class 10: B \$10 R \$8 W \$4





Cheshire County Open Junior Horse Show Presented by 4H

Show Time:

Sunday 2:00 PM for Beginners, Juniors and Seniors.

1. All participants in any 4-H mounted event shall wear a properly fitted SEI approved helmet (ASTM Standard 1163-88), with a secured chin harness, at all times when mounted on an equine or in a vehicle pulled by one or more equines.
2. Eligibility. **Open to all youth 8-19 yrs by 1/1/11**
3. Entries. Pre-entries must be postmarked on or before July 6.
4. Pre-entries: 4-H members free entry for one division, however your pass fees must accompany your entry. 4-H approval form to be mailed with your entry. Non 4-H: \$15 entry per horse. Pass fees must accompany entry.
5. Post entry: \$25 for every entry. Each horse/rider combination or division is considered a separate entry. 4-H approval form to be presented at registration if entering Fit & Show.
6. Passes. Pass fees must be enclosed with your entry for each rider and driver. These fees are for 4-H Exhibitor Passes which only exhibitors, their parents and/or the trailer driver may obtain. They will be mailed to you. All people ages 5 and older must have a pass to enter the grounds or must purchase one at the gate. Gatekeepers will charge regular admission for all those without passes. Refer to info in the front of this book.
7. Entering the Grounds: All trailers should enter via the MAIN GATE. Those showing from their trailer will park NORTH of the ring. Those using stalls will drive to the barn area, unload, and then park in the LIVESTOCK LOT on the hill.
8. Conduct. Horses may be led or ridden only in the stable area, the ring or directly between. Anyone taking their horse out of the stable and ring area will be disqualified after one warning. This is necessary for reasons of safety. This show will be run in accordance with 4-H Rules & Classes for NH Horse Shows.
9. Health. See 4-H Livestock Rule #5.
10. Stalls. A limited number of stalls are available in the regular barns on first paid first served basis. A stall fee of \$40 is required. You may not use any

stall until you have FIRST obtained a stall card which must be posted on the outside of the stall. \$30 will be refunded if stall is stripped when you leave. Tack stalls - allowed if space permits with same fee structure. Arrangements for stall space during the open show must be made with the open stable manager. Those entering the open show must check with open show management to obtain their stall assignment. NO 4-H members will be stabled in TENT unless proof of open show stall assignment is provided. Refer to the horse show section in this book.

11. Showing from Trailer – Exhibitors MUST clean up the area around their trailer, placing manure in designated areas and trash in receptacles before leaving. Premiums will be withheld for any not complying.
12. Rider may ride more than one seat. A separate entry fee and number is required for each division.
13. Any class may be divided or combined at the discretion of the show committee. If there are less than 5 entries, classes will be combined where possible.
14. Ribbons. A trophy and 6 ribbons will be awarded in each class with the exception of Fit & Show and Beginner A, which are placed Danish.
15. Walk Trot A - 1st year of showing, pinned Danish.
Walk Trot B - 2nd year of showing, open and placed as a regular class. Only one year at this level unless tested.
Beginner Walk/Trot/Canter Class. 1st year of cantering - open and placed as a regular class.
16. A 2 minute gate call will apply. When class is closed no additional entries will be allowed.
17. Any hold must be requested 2 classes prior to affected class.
18. Fit & Show. ONLY the member showing the horse may prepare the horse - this includes braiding. NO adult is allowed to participate in preparation of the horse in any way. Violation will result in disqualification. Class is optional. 4-H approval forms must be shown. Premiums will only be paid out to Cheshire County exhibitors

Premium: B \$20 R \$15 W \$10

CLASS ORDER

1. **Horse Quiz.** Optional. Cheshire 4-H horse members only. To be taken after your Fit & Show class.

Premium: B \$12 R \$8 W \$2

Fit and Show Class – Cheshire County 4-H Only

2. Novice (First year of Fit and Show)
3. Beginner (WTA, WTB, WTC)
4. Junior
5. Senior
6. Fit and Show Championship and Show
Only for top 2 places in Juniors and Seniors fit & show

Equitation

7. Walk/Trot A Equitation
8. Walk/Trot B Equitation
9. Walk/Trot/Canter Equitation
10. Junior English Equitation
11. Senior English Equitation
12. Western Equitation
13. Novice Driver Reinsmanship
14. Junior Driver Reinsmanship
15. Senior Driver Reinsmanship

Pleasure

16. Walk/Trot A Pleasure
17. Walk/Trot B Pleasure
18. Walk/Trot/Canter Pleasure
19. Junior English Pleasure
20. Senior English Pleasure
21. Western Pleasure
22. Novice Driver Pleasure
23. Junior Driver Pleasure
24. Senior Driver Pleasure

Hack

25. Western Trail Hack –
This class is a competition in the performance of a sensible, well-mannered horse that gives its rider a comfortable & pleasant ride in open country & over obstacles. Extensions and 2 obstacles or task included.
26. Junior Bridlepath
Includes extended trot and hand gallop
27. Senior Bridlepath Hack
See Junior Bridlepath Hack
28. Hunter Hack
To be shown at walk, trot, canter, hand gallop both ways of the ring, jump 2 fences approximately 2'6" high.

29. Junior Driving Hack
Run with rail work and then 3 obstacles to follow, pattern to be posted.
30. Senior Driving Hack
See Junior Driving Hack

★ **½ Hour Breaks will be determined at time of show.**

Discipline Rail

31. Novice Driving Discipline Rail
32. Beginner Discipline Rail

Championship

33. Walk/Trot/Canter Championship
Judged on equation/ pleasure/ pattern
34. Walk/ Trot B Championship
Same as Walk/Trot/Canter
35. Junior Equitation Championship
Open to those who have ridden & placed in the junior equitation class. Must enter during supper break. Pattern will be posted at super break.
36. Senior Equitation Championship
Open to those who have ridden & placed in the senior equitation class. Must enter during supper break. Pattern will be posted at super break.
37. Open Championship Driving
Open to those who have driven & placed in any driving class. Must enter during supper break. Will be judged on 50% pleasure and 50% Reinsmanship Pattern will be posted at super break.
38. Open Pleasure Champion
39. Open Driving Pleasure Champion